



Annual Meeting

April 25-26, 2025



Pastides Alumni Center • Columbia, SC



Please join the SCMA Board of Trustees for a
Welcome Reception

Honoring SCMA members, exhibitors, speakers,
and guests of the 2025 SCMA Annual Meeting

Friday, April 25

5 p.m. – 6 p.m.

Exhibit Hall, Ballroom 1&2



TABLE OF CONTENTS

- 2 | Event Highlights
- 3 | Board of Trustees and Officers
- 4 | Special Guest José Morey, MD
- 5 | [SCMedPAC Donors](#)

MEETING SCHEDULE

- 6 | Event Schedule
- 11 | SCMA Alliance Annual Session

CME SESSION TOPICS

- 7 | CME Overview and Credit Information

Friday, April 25

- 8 | SCMA Educational Session: Hot Topics
- 9 | SCMA Bioethics Committee Educational Session
- 9 | Keynote Speaker: José Morey, MD
- 10 | SCMA President's Session

Saturday, April 26

- 10 | SCMA Educational Session: Controlled Substance Training
- 13 | Pastides Alumni Center Map
- 21 | Exhibitors
- 25 | Past Presidents

REGISTRATION HOURS

Friday, April 25 Saturday, April 26
8:00 a.m. – 6:00 p.m. 7:30 a.m. – 1:00 p.m.

Register and receive name badges and information packets during the above hours. Exhibitors, scientific session speakers, and moderators may pick up their information packets at the registration desk. Name badges must be worn at all times to ensure admission to the exhibit area, meetings, and complimentary functions.

The Inauguration/Gala is a ticketed event. If you registered to attend the you will have a ticket in your packet. You must have a ticket to attend.

THE 177TH ANNUAL MEETING OF THE SOUTH CAROLINA MEDICAL ASSOCIATION EVENT HIGHLIGHTS

WELCOME RECEPTION

We invite you to the SCMA Board of Trustees Meet & Greet honoring SCMA members, exhibitors, speakers, and guests! Exhibitors will be on-site to showcase their products and answer your questions.

INAUGURATION CEREMONY

On Saturday evening, we will be inaugurating our 164th President of the South Carolina Medical Association, Henry Frederick Butehorn III, MD. Dr. Butehorn is an Otolaryngologist/Head and Neck Surgery physician from Spartanburg. Join us for the Inauguration Ceremony and Gala Awards Dinner and welcome Dr. Butehorn as President.

GALA AWARDS DINNER

During the Gala Awards Dinner on Saturday evening, we will be honoring new President, Dr. Butehorn, along with new Alliance President, Mrs. Jennifer Britanisky. In addition, we will be presenting several awards. Join us to celebrate!

EDUCATIONAL SESSIONS

We are excited to announce that this year's meeting will offer a variety of CME sessions on various hot topics in healthcare.

LOCATION

Columbia, SC

EXHIBIT HALL HOURS

Located in Ballrooms 1&2

Friday, April 25

8:00 a.m. - 6:30 p.m.

Saturday, April 26

7:30 a.m. - 1:00 p.m.

WELCOME RECEPTION

Friday, April 25

Exhibit Hall Ballrooms 1&2

5:00p.m. - 6:00 p.m.

PRESIDENTIAL INAUGURATION CEREMONY EVENTS

This is a ticketed event. You must have a ticket to attend.

Saturday, April 26

Columbia SC Metropolitan Convention Center

Cocktails: Columbia Ballroom B&C
6:00 p.m. - 6:30 p.m.

Inauguration: Columbia Ballroom B&C
6:30 p.m. - 7:00 p.m.

Gala Awards Dinner: Columbia Ballroom B&C
7:00 p.m. - 11:00 p.m.

WIFI LOGIN INFORMATION

Network Name:

Note: wifi network expires every 12 hours

Windows users:

- Locate uscguest wifi network (bottom-right)
- Click on uscguest, click connect
- Verification window will appear, click create account
- Enter information, then click register
- Click sign in

Mac users:

- Locate uscguest wifi network (top-right)
- Click on uscguest, click connect
- Verification window will appear, click create account
- Enter information, then click register
- Verify cellular provider, click register



- Click sign in
- Sign in to portal using your email address
- Click accept
- Registration process complete



M. Mayes DuBose, MD
President



Henry F. Buthorn III, MD
President-Elect



Wesley H. Frierson, MD
Chairman, Trustee, Ninth District

SOUTH CAROLINA MEDICAL ASSOCIATION 2025 BOARD OF TRUSTEES

OFFICERS

M. Mayes DuBose, MD
President

Henry F. Buthorn III, MD
President-Elect

Helen M. Stockinger, MD
Immediate Past President

Wesley H. Frierson, MD
Chair, Trustee, Ninth District

Amanda S. Davis, MD
Vice Chair, Trustee, First District

H. Timberlake Pearce Jr., MD (Tim)
Secretary

A. Miles Scott, DO
Treasurer

F. Cleave Ham, MD
Member-At-Large, Trustee,
Fourteenth District

Jeffrey P. Cashman, DO
Speaker, Legislative Delegate Committee

Stefanie M. Putnam, MD
Vice-Speaker, Legislative
Delegate Committee

TRUSTEES

Laurie M. Theriot Roley, MD
Trustee, Second District

Jerome B. Aya-ay, MD
Trustee, Third District

Asutosh S. Gor, MD (Bobby)
Trustee, Fourth District

Rodney K. Alan, MD
Trustee, Fifth District

Jessica L. Cvinar, MD
Trustee, Sixth District

James M. Fuller, MD (Jim)
Trustee, Seventh District

James L. Wells III, MD
Trustee, Eighth District

Lisa E. Heichberger, MD
Trustee, Tenth District

Gerald F. Congdon, MD
Trustee, Eleventh District

Gary A. Delaney, MD
Trustee, Twelfth District & Vice-Chairman
of the SC Delegation to the AMA

Baxter F. McLendon III, MD
Trustee, Thirteenth District

Mc Anto Antony, MD
Trustee, Young Physician Section

Stephanie Mayle Scott, DO
Trustee, Resident & Fellow Section

Michelle E. Troup
Trustee, Medical Student Section

AMA DELEGATES AND ALTERNATE DELEGATES

Gregory Tarasidis, MD (Greg)
Chairman of the SC Delegation to
the AMA

Gary A. Delaney, MD
Trustee, Twelfth District & Vice-Chairman
of the SC Delegation to the AMA

Richard C. Osman, MD (Rich)
AMA Delegate

Bruce A. Snyder, MD
AMA Delegate

Stefanie M. Putnam, MD
AMA Alternate Delegate

Alexander Ramsay, MD
AMA Alternate Delegate

Todd E. Schlesinger, MD
AMA Alternate Delegate

Christopher A. Yeakel, MD
AMA Alternate Delegate



PLEASE WELCOME SPECIAL GUEST

José Morey, MD

Chief Health Officer
CEO and Founder
Forbes Technology Council Member
2020/2021 Zhi-Xing Eisenhower Fellow

José Morey, MD is Chief Executive Officer and Founder of Ad Astra Media LLC, an Eisenhower Fellow, and Co-Founder of Ever Medical Technologies. He is a health and technology keynote speaker, author, and consultant for NASA, Forbes, MIT, the United Nations World Food Program and the White House Office of Science and Technology Policy. He is considered the world's first Intergalactic Doctor and is often featured on Forbes, Univision, CNBC, and NASA360. He coined Puerto Rico as the future "Silicon Island" as appeared in Forbes, The Weekly Journal, Reddit and Hispanic Executive. Additionally, along with Frank Carbajal, he is co-author of "LatinX Business Success" by Wiley Publishing – recently highlight as #1 on Amazon. Available at Amazon, Barnes & Noble, Target, Kindle, Kobo and more.

Social Media Tags:

Twitter: @drmorey1

LinkedIn: [linkedin.com/in/drjosemorey/](https://www.linkedin.com/in/drjosemorey/)

Instagram: @drintergalactic

Websites:

Personal Website: drjosemorey.com

Ad Astra Media Website:
adastrateammedia.com

YouTube: youtube.com/channel/UCUCw_w_sRw-bN0_tYw3QDNQ

SCMedPAC

THANK YOU TO OUR DONORS – as of April 1

CORPORATE GOLD (\$3,500)

Charleston ENT

PHYSICIAN PLATINUM (\$1,500)

Jerome Aya-ay, MD
Henry F. Butehorn III, MD
Ebele C. Compean, MD
Amanda S. Davis, MD
M. Mayes DuBose, MD
Wesley H. Frierson, MD
Nancy Mann Netter, MD

Laurie Theriot Roley, MD
John C. Ropp III, MD
March E. Seabrook, MD
Stacy J. Story, MD
Gregory Tarasidis, MD
James L. Wells III, MD

PHYSICIAN GOLD (\$1,000 – \$1,499)

Rodney K. Alan, MD
Gerald F. Congdon, MD
Gary A. Delaney, MD
Warren D. Gentry Jr., MD
Asutosh S. Gor, MD

Joséph D. Hoyle, MD
H. Timberlake Pearce Jr., MD
Anthony Miles Scott, DO
Samuel R. Stone, MD
Christopher A. Yeakel, MD

PHYSICIAN SILVER (\$500 – \$999)

Jeffrey P. Cashman, DO
Howard A. Farrell, MD
Eric J. Freiburger, DO
Lisa E. Heichberger, MD
Marcelo Hochman, MD
Shawn P. McKay, MD

Robert R. Morgan Jr., MD
Thomas W. Phillips Jr., MD
David A. Rosi, DO
Matthew D. Scarlett, MD
Kevin B. Walker, MD



2025 SCMA ANNUAL MEETING

EVENT SCHEDULE

FRIDAY, APRIL 25

8:00 a.m. – 6:00 p.m.	Registration	Ballroom 1 & 2
9:00 a.m. – 11:00 a.m.	SCMA Educational Session: Hot Topics	Ballroom 3
11:00 a.m. – 12:00 p.m.	SCMA Bioethics Committee Educational Session	Ballroom 3
12:00 p.m. – 1:30 p.m.	Past Presidents Lunch and Keynote Speaker José Morey, MD <i>All attendees invited</i>	Ballroom 3
1:30 p.m. – 2:30 p.m.	Continued: SCMA Bioethics Committee Educational Session	Ballroom 3
2:30 p.m. – 5:00 p.m.	SCMA President's Educational Session	Ballroom 3
5:00 p.m. – 6:00 p.m.	SCMA Resident, Fellow, and Student Poster Presentations	Promenade outside of Ballroom 1 & 2
5:00 p.m. – 6:00 p.m.	Welcome Reception	Ballroom 1 & 2
6:00 p.m. – 6:30 p.m.	Independent Physicians Meeting	Conference Room 1C
6:00 p.m. – 6:30 p.m.	Employed/Corporate Physicians Meeting	Conference Room 1A

SATURDAY, APRIL 26

7:30 a.m. – 1:00 p.m.	Registration	Ballroom 1 & 2
7:30 a.m. – 8:30 a.m.	Breakfast with Exhibitors	Ballroom 1 & 2
8:00 a.m. – 2:00 p.m.	South Carolina Gastroenterology Association Meeting	2nd Floor
8:30 a.m. – 11:30 a.m.	SCMA Town Hall and Legislative Update	Ballroom 3
11:30 a.m. – 1:00 p.m.	Lunch and giveaways in the Exhibit Hall	Ballroom 1 & 2
1:00 p.m. – 3:00 p.m.	SCMA Educational Session: Controlled Substance Training	Ballroom 3
1:00 p.m. – 2:00 p.m.	SCMA YPS/RFS/MSS Meetings	Conference Rooms 1C & 1B
BREAK	Enjoy networking with colleagues or take time to explore Columbia	
6:00 p.m. – 11:00 p.m.	SCMA Presidential Inauguration and Gala Awards Dinner – Ticketed event. Bring your ticket to enter.	SC Columbia Metropolitan Convention Center

SUNDAY, APRIL 27

9:00 a.m. – 11:00 a.m.	SCMA Board of Trustees Meeting Trustees Only	Yellow Jessamine
------------------------	---	------------------

2025 SCMA ANNUAL MEETING

CME SCHEDULE AT A GLANCE

DATE/TIME	SESSION	LOCATION	MAX. AMA PRA CATEGORY 1 CREDITS™
Friday, April 25			
9:00 a.m. – 11:00 a.m.	SCMA Educational Session: Hot Topics	Ballroom 3	2.0
11:00 a.m. – 12:00 p.m.	SCMA Bioethics Committee Educational Session	Ballroom 3	1.0
12:30 p.m. – 1:30 p.m.	Keynote Speaker – José Morey, MD	Ballroom 3	1.0
1:30 p.m. – 2:30 p.m.	Continued: SCMA Bioethics Committee Educational Session	Ballroom 3	1.0
2:30 p.m. – 5:00 p.m.	SCMA President’s Educational Session	Ballroom 3	2.5
5:00 p.m. – 6:00 p.m.	SCMA Resident, Fellow, and Student Scientific Poster Session	Promenade outside of Ballroom 1 & 2	1.0
Saturday, April 26			
1:00 p.m. – 3:00 p.m.	SCMA Educational Session: Controlled Substance Training	Ballroom 3	2.0
			10.5 Total

ABOUT CME CREDIT

The 2025 Scientific Assembly was designed for South Carolina physicians of all specialties. The South Carolina Medical Association reserves the right to modify speakers, topics, and learning objectives as needed.

The South Carolina Medical Association (SCMA) designates this live activity for a maximum of **10.5 AMA PRA Category 1 Credits™**. Physicians should claim only the credit commensurate with the extent of their participation in the activity.

The South Carolina Medical Association is accredited by the Accreditation Council for Continuing Medical Education to provide continuing medical education for physicians. The South Carolina Medical Association adheres to the ACCME standards regarding industry support of CME in disclosure of faculty and commercial support relationships. This information will be reported at each session.

To be compliant with the AMA’s “Physician’s Recognition Award and Credit System,” we require physicians to attest to the amount of time they are claiming credit – which should be commensurate with the extent of time they participate in a CME activity. To assure compliance, we now require all physicians attending or participating in an accredited CME activity, to complete the “contact information” portion of the evaluation and, specifically, sign where indicated on the evaluation.

CONTINUING MEDICAL EDUCATION (CME) AGENDA

SCMA EDUCATION SESSION: HOT TOPICS| FRIDAY, APRIL 25

9:00 a.m. – 11:00 a.m.

The Future of Healthcare Delivery in Rural South Carolina

Moderated by: Gabe Simpson, MD, SCMA CME Committee

The Future of Healthcare Delivery in Rural South Carolina – Primary Care

Travis Novinger, MD, Palmetto Family Medicine

At the end of this session participants should be able to:

- Discuss current telehealth technologies and their effectiveness in rural healthcare
- Explore recruitment and retention strategies for rural primary care providers
- Discuss innovative approaches including: collaborative care models with specialists, loan forgiveness and incentive programs, international medical graduate recruitment strategies, community health worker support models

Physician Leadership, Hospital Relationships, and the Importance of Both on the Care of our Communities

Matthew Logan, MD, MHCM, President & CEO, Self Regional Healthcare

At the end of this session participants should be able to:

- Explore the financial challenges facing hospitals
- Discuss the impact of hospital closures on rural community health and local economies
- Discuss innovative models such as: hybrid care models combining inpatient and outpatient services, collaborative networks with larger health systems and payors, alternative funding mechanisms and grant opportunities

Rural Obstetrics and Gynecology

Katee Wyant, MD, Obstetrics-Gynecology, McLeod Women's Care Clarendon

At the end of this session participants should be able to:

- Discuss the current state of obstetric and gynecologic care in South Carolina
- Discuss the unique obstacles facing rural patients and clinicians in South Carolina
- Discuss how state legislation affects the ability of practices to recruit physicians in South Carolina

The Future of Healthcare Delivery in Rural South Carolina – Healthcare Payors

William "Tripp" Jennings Jr., MD, Innovation Officer and Vice President, BlueCross BlueShield of South Carolina

At the end of this session participants should be able to:

- Discuss the financial gaps created by current payment models and the impact on healthcare
- Explore potential solutions such as: value-based care models tailored to rural contexts, the impact of data sharing to support the delivery of care and increased efficiency
- Discuss policy recommendations for more affordable healthcare

11:00 a.m. – 12:00 p.m.

SCMA Educational Session: SCMA Bioethics Committee

Moderated by: Sewell Kahn, MD, Chair, SCMA Bioethics Committee

AI in Burnout: Cause or Cure

Sewell Kahn, MD, Chair, SCMA Bioethics Committee

At the end of this session participants should be able to:

- Discuss burnout in health care
- Discuss how the very process of the doctor patient relationship has influenced burnout
- Describe how the computer in general and electronic health record (EHR) specifically has contributed to burnout
- Explore the role Artificial Intelligence has in either decreasing burnout or making it worse

Anchoring Contemporary Debate About the Ethics of AI and Big Data in a Historical Context

George Khusf, Ph.D., Professor, Director, Center for Bioethics, University of South Carolina

At the end of this session participants should be able to:

- Understand how ethical challenges posed by AI and Big Data depend on visions of AI that shift over time
- Discuss how influential contributions to Evidence Based Medicine (EBM) and to Bioethics in the 1970's-1990's arose in response to challenges posed by AI and by new ways of storing, processing, and retrieving information
- Discuss the history of bioethics in ways that address contemporary ethical challenges posed by AI and Big Data

12:00 p.m. – 1:30 p.m.

Past Presidents Lunch and Keynote Speaker - Dr. José Morey, MD

AI in Medicine and the New Age of Innovation

José Morey, MD, CEO and Founder of Ad Astra Media LLC

At the end of this session participants should be able to:

- Understand the basics of machine learning and AI
- Define practical applications and FDA approved AI applications
- Understand how to remain innovative in this new technology renaissance

1:30 p.m. – 2:30 p.m.

CONTINTUED: SCMA Educational Session: SCMA Bioethics Committee

Personhood and Reproductive Health Care

Joy Blanton Scurry, MD, Family Medicine, Amwell Medical Group Urgent Care and Nancy Zisk, JD, Professor of Law, Charleston School of Law

At the end of this session participants should be able to:

- Explore the limits of legislative bodies in healthcare decision making and the ramifications for the doctor patient relationship
- Describe the bioethical considerations of what it is to “regard responsibility to the patient as paramount” (Medical Ethics Principle VIII) when providing reproductive health care
- Explore the bioethical implications of being in “support of access to medical care for all people” (Medical Ethics Principle IX) when a patient presents with reproductive health care needs complicated by the social determinants of health

2:30 p.m. – 5:00 p.m.

SCMA Educational Session: The President's Session

Moderated by: M. Mayes DuBose, MD, SCMA President

Driving Healthcare Innovation: Building Collaborative Skills and Leadership for Physicians

Rhodes Amaker, Co-Founder & Chief Executive Officer at Sylvan Health; Shane Grivich, Co-Founder and Chief Strategy Officer, ChartSpan; Nate Henderson, DO, Chief Medical Officer and Vice President of Clinical Quality, BlueCross BlueShield of South Carolina and Craig Kilgore, FCMPE, Chief Executive Officer, Coastal Vascular & Vein Center

At the end of this session participants should be able to:

- Gain insights into how physicians can actively contribute to innovation in healthcare while maintaining a focus on patient outcomes
- Learn practical strategies for improving communication and collaboration with non-physicians, such as technologists, administrators, and business leaders
- Recognize the value of interdisciplinary perspectives in driving healthcare innovation and how to integrate these effectively into clinical practice
- Identify common cultural, structural, and hierarchical challenges to collaboration and explore solutions for creating inclusive and equitable innovation environments
- Understand how physicians can develop business acumen and innovation-oriented mindsets through mentorship, formal education, and experiential learning
- Discover how physicians can partner with non-physicians to implement cutting-edge technologies, ensuring clinical relevance and operational feasibility
- Understand how the evolving healthcare landscape demands new skills and collaborative approaches from physicians, positioning them as leaders in innovation

The Evolving Healthcare Landscape: Challenges, Trends, and the Concierge Medicine Opportunity

Terry Bauer, Chief Executive Officer, Specialdocs Consultants

At the end of this session participants should be able to:

- Detail the current and future state of primary care in the US
- Review the trends and forecasts of physician independence vs. employment
- Outline the benefits of concierge medicine
- Understand the opportunities that exist to convert a practice, join a practice or acquire a practice

5:00 p.m. – 6:00 p.m.

SCMA Poster Session – Visit the student and resident posters during the welcome reception.

Be sure to participate as a judge to receive your hour of CME.

SATURDAY, APRIL 26

1:00 p.m. – 3:00 p.m.

SCMA Educational Session: Controlled Substance Training

We Still Need to Talk About Pain Meds?: The Opioid Epidemic and Substance Use Disorder

Kevin B. Walker, MD, FASA, Medical Director Division of Pain Medicine, Prisma Health

At the end of this session participants should be able to:

- Understand the impact of the opioid epidemic in South Carolina, the “WHY”
- Explain opioid stewardship and how it can improve a health system
- Discuss strategies on how to change your health system’s culture through education
- Open discussion of future opportunities

2025 SCMA ANNUAL MEETING

SCMA ALLIANCE ANNUAL SESSION

FRIDAY, APRIL 25 AT PALMETTO CLUB

9:30-10:00 a.m.

Registration and Continental Breakfast

10:00-10:10 a.m.

Pledge of Allegiance

Invocation

Memorial Ceremony

Introduction Of Guests

10:50 a.m.

McMeekin Room, Palmetto Club

Guest Speaker: Kenzie Delposen presents "Today's Youth and Social Media - What You Need to Know"

All members/guests are welcome

10:50 -11:00 a.m.

Break

11:00 a.m. -12:00 p.m.

Annual Session with Installation of Officers

McMeekin Room, Palmetto Club

12:30- 2:00 p.m.

Luncheon Honoring Past State Presidents and Current County Presidents

All Invited

PLEASE WELCOME SPECIAL GUEST

KENZIE DELPOSEN

Kenzie Delposen is a researcher and 3rd year Ph.D. student in the Department of Psychology at the University of South Carolina. Her current work focuses on child and adolescent mental health and how it intersects with social media use. She has a background in clinical work with youth and families that she uses to influence and guide her program of research. She has goals to bolster emerging research and develop interventions around healthy, safe social media use in youth and adolescents.





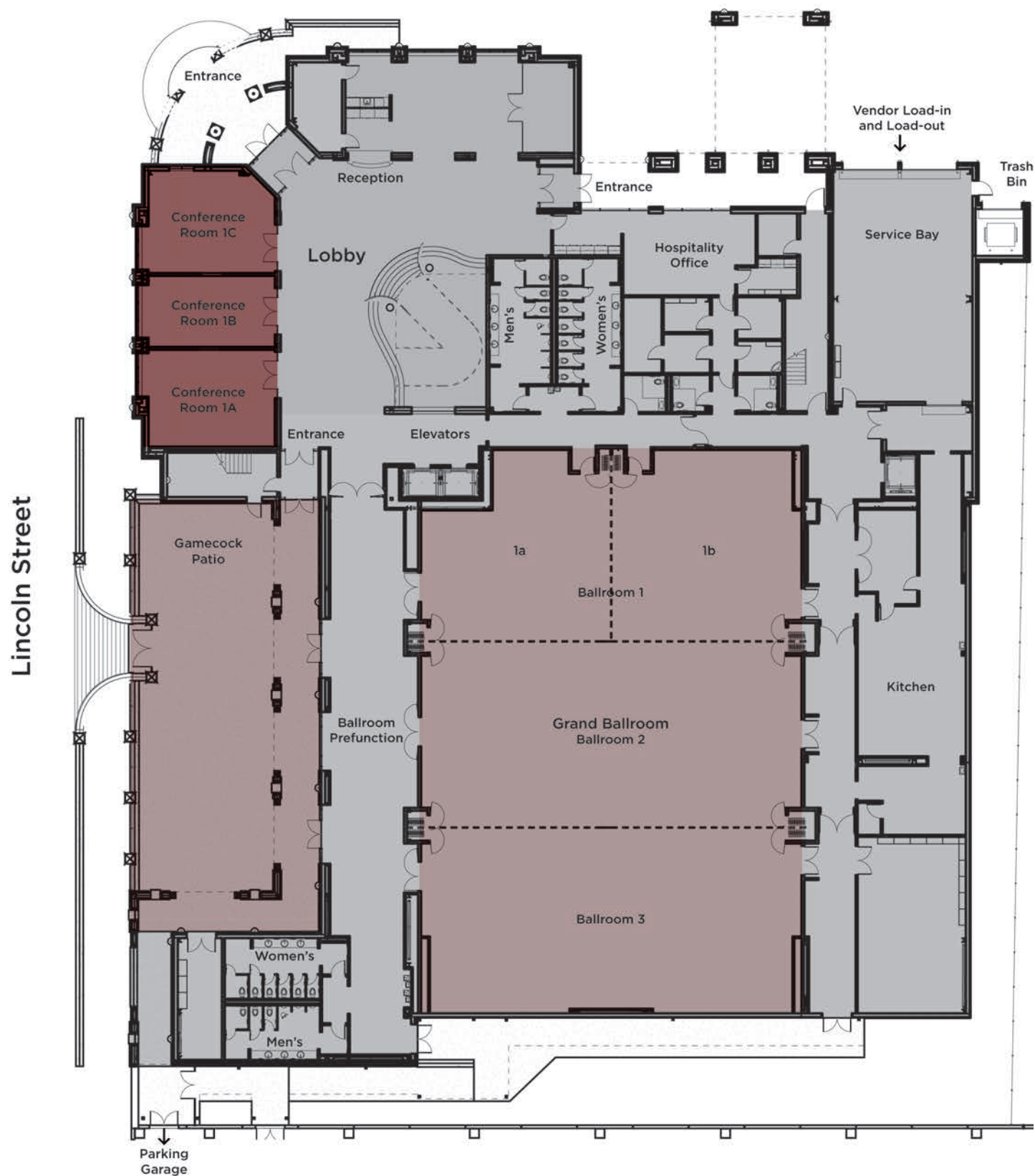
Save the Date 2026 Annual Meeting



April 24-25, 2026 • Charleston, SC

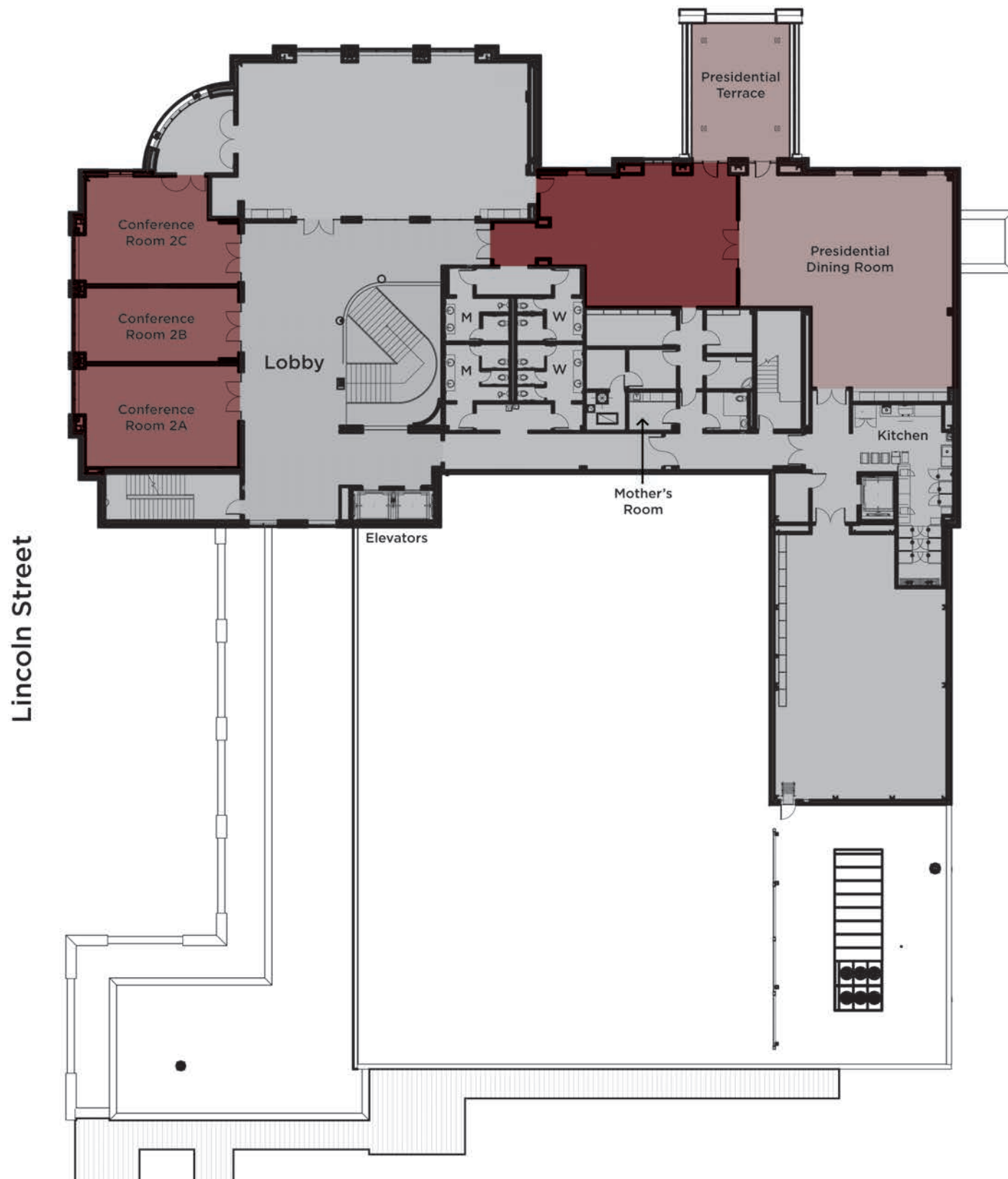
2025 SCMA ANNUAL MEETING ALUMNI CENTER MAP

FIRST LEVEL



2025 SCMA ANNUAL MEETING ALUMNI CENTER MAP

SECOND LEVEL



Make better decisions with advice from MagMutual

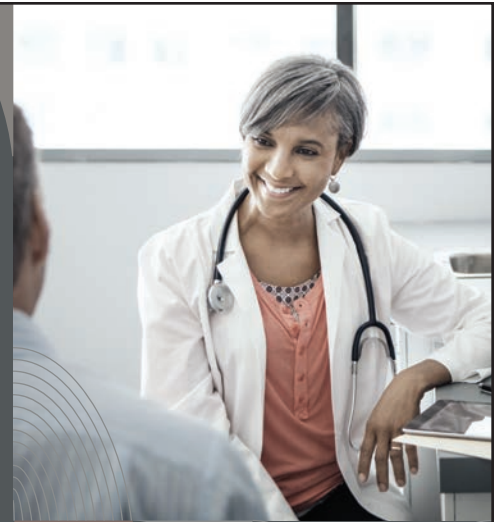
The healthcare industry is evolving and so should your understanding of the liability you face. We offer a whole new level of advice to help you reduce risk and choose the insurance that's right for you. With the help of our clinical, advice and patient safety experts, you can decrease your exposure and improve claims outcomes. Have questions about your professional liability risks? MagMutual has answers.

Expert guidance • Greater rewards • Better results



MAGMUTUAL®

MagMutual.com | 800-282-4882



**YOU WERE CALLED TO
PRACTICE MEDICINE**

***WE CAN HELP YOU
ANSWER***

IIH
**INTEGRAL
LEADERS
IN HEALTH**



**Practicing medicine is increasingly more difficult.
We are committed to empowering doctors.**

Bringing innovative solutions to South Carolina's independent physicians.



YOU WORK HARD TO HELP OTHERS—LET YOUR MONEY WORK JUST AS HARD FOR YOU.

At **890 CAPITAL**, we make real estate investing simple. We lend money to experienced real estate professionals so they can buy, fix, and sell properties. These loans are backed by real assets, which helps keep your investment secure. For you, this means steady, predictable returns via hands-off investing.

Join the top doctors in South Carolina and medical professionals around the country who are building passive income with **890 CAPITAL**—where your money doesn't sit, it grows.

**INTEGRITY.
INNOVATION.
PERFORMANCE.**

- Passive Income for Medical Professionals
- Above Market Returns (10%+)
- 100% Hands-Off Investing
- Backed By Real Estate
- Trusted by SC's Top Physicians
- Tax Advantaged Investments



LEARN MORE

890Capital.com/md

hello@890capital.com



**SCMA PRACTICE
INNOVATIONS**
A South Carolina PCMH Project



**PATIENT-CENTERED MEDICAL HOME:
ASSISTING YOUR PRACTICE WITH INNOVATIVE CARE**

We provide free educational, consulting, and coaching services to physician practices seeking recognition from the National Committee for Quality Assurance (NCQA) as a PCMH.

WWW.SCMAPCMH.ORG



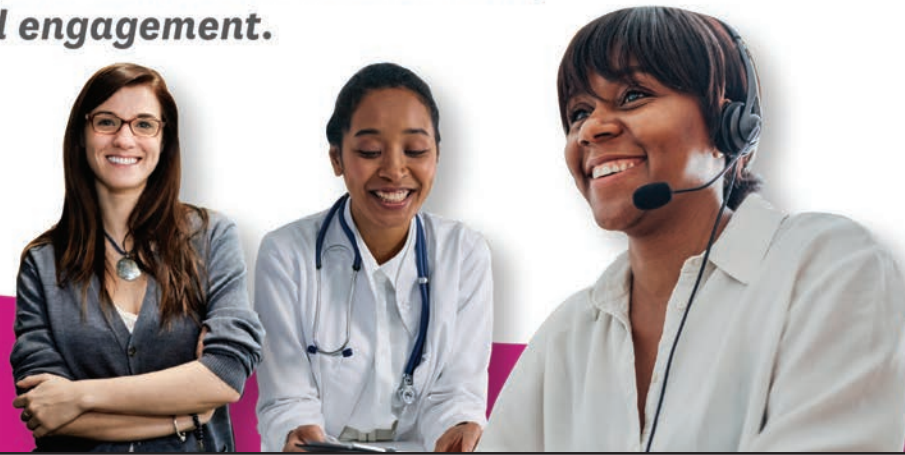
Empowering those who keep our communities healthy.

As proud sponsors of the **South Carolina Medical Association (SCMA)**, **Absolute Total Care** is dedicated to empowering our healthcare heroes.



We celebrate your commitment to service, advocacy, and engagement.

absolutetotalcare.com



HealthLinks Marketing

helps South Carolina's physicians focus on the art of medicine, while we focus on the art – and the science – of healthcare marketing.

We grow practices through our proven and proprietary multi-channel strategies — from creative campaigns to referring field marketing that moves the needle.

Scan the QR code to hear how your peers built a stronger, healthier brand.



(843) 732.4110

Caring for Patients is an Art.
Your Marketing Should Be, Too.

HealthLinks
MARKETING

Get Exclusive Deals for Blue Members With Blue365®

Access savings from top health and wellness brands around the country. Sign in to your My Health Toolkit® account to see special weekly and ongoing deals on:

- ▶ Health products
- ▶ Health and fitness clubs
- ▶ Weight loss programs
- ▶ Healthy travel experiences
- ▶ Personal care items
- ▶ And so much more



Blue Solutions Administrator is an independent licensee of the Blue Cross Blue Shield Association.

dexcom G7

**the most clinically
accurate CGM on
the market¹**

visit provider.dexcom.com

visit the above link for more information

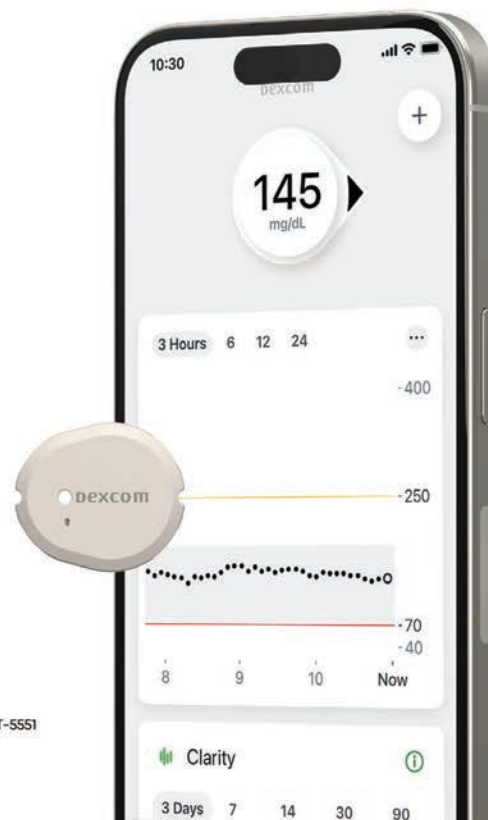
*Smart device
sold separately.[†]*

CGM = continuous glucose monitoring.

[†]Based on overall percentage of ICGM values within 20% of comparator glucose values. To view a list of compatible devices, visit dexcom.com/compatibility.

¹ Dexcom, Data on File, 2023.

For full prescribing information, including risks and benefits, go to provider.dexcom.com. ©2024 Dexcom, Inc. All rights reserved. MAT-5551





DESIGNED BY PHYSICIANS FOR HEALTHCARE PRACTICES

Since 1981, SCMA Members' Insurance Trust (MIT) has provided members with exemplary health insurance and customer service. Our commitment is to provide personalized service to our members which sets us apart.

Through MIT, access an array of benefits and coverage options, including:

- Medical Plans
- Dental Plans
- Supplemental Benefits
 - Vision Plans
 - Voluntary Life and AD&D
 - Accident Insurance
 - Critical Illness Insurance
 - Hospital Indemnity Insurance



**MEMBERS'
INSURANCE TRUST**



1-800-327-1021



MITinfo@scmedical.org



scmamit.com



ADVISORY
CAPITAL
INSURANCE

50 years behind us. Your best future ahead.

We're celebrating 50 years of enhancing the lives of those we serve. Discover our unwavering commitment to your success at **curi.com/go/scma**.

PROUD SPONSOR OF THE SOUTH CAROLINA
MEDICAL ASSOCIATION



2025 SCMA ANNUAL MEETING

EXHIBITORS

890 CAPITAL

You work hard to help others—let your money work just as hard for you. At 890 CAPITAL, we make real estate investing simple. We lend money to experienced real estate professionals so they can buy, fix, and sell properties. These loans are backed by real assets, which helps keep your investment secure, and are thoroughly underwritten. For you (our investors), this means steady, predictable returns via hands-off investing. Join the top doctors in South Carolina and medical professionals around the country who are building passive income with 890 CAPITAL—where your money doesn't sit, it grows.

ABSOLUTE TOTAL CARE

Absolute Total Care offers health insurance programs that fit the unique needs of our members. Programs include Medicaid plan, Medicare-Medicaid Plan (MMP), Ambetter from Absolute Total Care and Wellcare Medicare.

ALLIANCE FOR A HEALTHIER SOUTH CAROLINA

The Alliance for a Healthier South Carolina is a 501(c)(3) nonprofit uniting more than 60 diverse organizations across the state with a shared commitment to improving the health and well-being of all South Carolinians. With a strong focus on health equity, the Alliance aligns goals, metrics, and actions across institutions, organizations, and agencies at both the state and community levels. By actively bridging policy and practice, we connect and amplify existing and emerging equity-focused initiatives driving meaningful, systemic change for a healthier, more equitable South Carolina.

AMERICAN HEALTH IMAGING (AHI)

American Health Imaging (AHI) delivers the precision diagnostic imaging you need to determine next steps in patient care. With 7 convenient locations throughout South Carolina, faster scanning MRI technology for a more comfortable patient experience, in-network coverage with 99% of major health insurance plans, and costs up to 60% less than hospital-based imaging MRI and CT exams, AHI makes imaging easy for you and your patients.

BLUECROSS BLUESHIELD SOUTH CAROLINA

When you hear "BlueCross BlueShield of South Carolina," you'll see people nodding in recognition. Most everyone knows who we are. As the only South Carolina-owned and operated health insurance carrier, we have been offering security to Palmetto State citizens for more than 70 years. We are also one of South Carolina's largest employers. We offer the largest provider networks in the state, offering members the greatest choice in doctors, hospitals and other health care providers. Our extensive menu of health plans, discounts, added values and online services means more choices for our members, with plans to fit every budget and lifestyle.

BLUE SOLUTIONS ADMINISTRATOR

Blue Solutions Administrator (BSA) is the only South Carolina-based third-party benefits administrator (TPA). Offering the exceptional performance and savings of the BlueCard National Provider Network, BSA caters to the self-funded market by covering and serving employees who live anywhere in the country. Cantey Technology Consulting

CANTEY TECHNOLOGY CONSULTING

Cantey Technology Consulting is a distinguished managed service provider with a dedicated focus on the healthcare sector. Our core expertise lies in partnering with medical practices to proficiently manage their technology infrastructure, deliver comprehensive IT support, and fortify their defenses against cyber threats. With extensive experience spanning numerous Electronic Health Record (EHR) and Practice Management (PM) vendors, we possess a nuanced understanding of the challenges faced by healthcare providers and practice administrators. At Cantey Technology Consulting, we take pride in our unwavering commitment to urgency, ensuring seamless integration of technology solutions that empower practices to deliver superior patient care. Operating across a broad geographical expanse encompassing South Carolina and neighboring states from Virginia to Florida, we are strategically positioned to serve healthcare entities with efficiency and excellence.

2025 SCMA ANNUAL MEETING

EXHIBITORS

CAROLINAS MEDICAL GROUP MANAGEMENT ASSOCIATION (CAROLINAS MGMA)

The Carolinas Medical Group Management Association (Carolinas MGMA) gives the professional administrator rich information and contacts for professional growth. Our mission is for the Carolinas MGMA to maximize the value and effectiveness of medical group leaders through educational programs, information exchange, networking, advocacy, and professional development opportunities. We represent the healthcare industry and medical practices across North and South Carolina. Our membership includes executives and managers of private group practices, academic medical centers, integrated delivery systems, and companies that support medical provider organizations. We are the leaders for tomorrow's healthcare.

CHUBB INSURANCE

Chubb is a world leader in insurance. With operations in 54 countries and territories, Chubb provides commercial and personal property and casualty insurance, personal accident and supplemental health insurance, reinsurance and life insurance to a diverse group of clients. As an underwriting company, we assess, assume and manage risk with insight and discipline. We service and pay our claims fairly and promptly. We combine the precision of craftsmanship with decades of experience to conceive, craft and deliver the very best insurance coverage and service to individuals and families, and businesses of all sizes.

CONSTELLATION QUALITY HEALTH

Headquartered in Raleigh, NC, Constellation Quality Health, formerly CCME, is a national health care quality consultant organization with more than 40 years as a QIO contractor. We provide quality improvement programs, clinical reviews, audit and technical services, and protection from financial fraud, waste, and abuse. Our team of credentialed consultants apply innovative technology, data analytics, and deep industry actionable insights and strategic guidance to improve system performance for better patient-centered, cost-effective care.

CURI

Curi's physician-focused approach delivers the protection needed and attention deserved. From traditional MPL insurance to alt risk solutions, advisory to capital solutions, we're time-tested and trusted—in medicine, business, and life. Curi.com

DEXCOM, INC.

Dexcom, Inc. empowers people to take control of health through innovative biosensing technology. Founded in 1999, Dexcom has pioneered and set the standard in glucose biosensing for more than 25 years. Dexcom's portfolio of glucose biosensors are designed to address the needs of people with all types of diabetes and prediabetes. These biosensors provide users with powerful and personalized insights revealing how factors like food, exercise, medication, and sleep impact glucose and overall health. Dexcom biosensing technology has transformed how people manage diabetes and track their glucose, helping them feel more in control and live more confidently.

DOCTORS CARE, P.A.

Since 1981, Doctors Care has provided convenient, quality urgent and family care services to patients across South Carolina. Staffed by experienced, dedicated, and passionate medical professionals, Doctors Care is committed to our patients' health and well-being. We are experts in urgent care, family care, corporate wellness, and occupational medicine. Our focus is on delivering exceptional care that is exceptionally convenient. We offer evening and weekend hours, walk-in services, onsite X-rays and labs, and innovative features like online check-in and Doctors Care Anywhere virtual urgent care where you can visit a provider on your mobile device from the comfort of home, office, or on the go.

EXPRESS SCRIPTS

Express Scripts by Evernorth manages your prescription benefit on behalf of your employer. Express Scripts is dedicated to helping patients access affordable prescription drugs safely and efficiently. Each year, as a leading pharmacy benefits manager, Express Scripts saves approximately \$32 billion for the nearly 187 million Americans and thousands of clients we serve. We're here to give you better, simpler, ways to manage your medication and your health.

FIRST CHOICE BY SELECT HEALTH SOUTH CAROLINA

First Choice by Select Health of South Carolina is the oldest and largest Medicaid plan in the state. Our mission is to help people get care, stay well and build healthy communities.

FULCRUM RISK SOLUTIONS

For over 20 years we've been advising and protecting the members of the SCMA and the medical community. We protect the health and wellness of your people through our Life and Health division. We protect your business practice from all external threats through our property casualty division. We protect your personal assets and way of life through our personal lines division. Because we are owned by the SCMA and managed by Physicians, our team has a unique and intimate understanding of the specialized needs of our Physicians.

HEALTHLINKS MARKETING

HealthLinks Marketing is a trusted leader in healthcare strategic marketing, fueled by a passion for disruptive innovation and measurable results. We marry art and science with unparalleled creativity and branding that accurately reflects the quality care you deliver.

INTEGRAL LEADERS IN HEALTH

Integral Leaders in Health is a public-benefit corporation (PBC) created by healthcare leaders to address South Carolina's Medical Care Crisis.

MAGMUTUAL

For nearly four decades, MagMutual has been a leading provider of medical professional liability insurance. Today, we deliver comprehensive coverage for the practice, business and regulation of medicine to more than 30,000 healthcare providers and organizations nationwide. Our focus on innovation enables us to provide exceptional service, extensive support and financial benefits that result in improved outcomes and stronger PolicyOwnersTM.

MOLINA HEALTHCARE

Molina Healthcare of SC is a managed care organization committed to delivering quality care for over 40 years to those who need it most. MHSC serves Medicaid, Medicare, Dual Eligible (MMP) and the Marketplace populations.

MUSC COLLEGE OF MEDICINE

The Medical University of South Carolina's College of Medicine is leading the way in all areas of the MUSC mission — medical education, patient care, and biomedical research — at our main campus in downtown Charleston and across the state. The largest and oldest academic medical center in South Carolina, we serve a diverse group of more than 740 medical students, 850 trainees in residency and fellowship programs, and patients throughout our state and beyond. The College is home to a robust basic, clinical and translational research enterprise, with more than \$250 million in extramural research funding awarded in the last year.

PREMIER HEALTH

Premier Health is a management service organization predominantly focused on revenue cycle billing and Athena EMR.

PRISMA HEALTH

With nearly 30,000 team members, 18 hospitals, 2,984 beds and more than 300 physician practice sites, Prisma Health serves more than 1.2 million unique patients annually. Its goal is to improve the health of all South Carolinians by enhancing clinical quality, the patient experience and access to affordable care, as well as conducting clinical research and training the next generation of medical professionals. For more information, visit www.PrismaHealth.org.

PFIZER VACCINES

Breakthroughs that Change Patients Lives: Our purpose is why we exist as a company: breakthroughs that change patients' lives. It inspires every action we take and reflects our commitment to putting patients at the center of it all. It gives meaning to our work and a tangible objective to measure it against. Each word in our purpose represents a critical aspect of the overall role we play for patients and society. Pfizer's Ambition: Change A Billion Lives a Year. Our ambition is a clear articulation of the impact we strive to make on the world through a commitment to our purpose. It sets a bold and measurable yardstick for us to meet by the year 2027 and reminds everyone at Pfizer to think big in the pursuit of breakthrough results.

PROASSURANCE

ProAssurance is an industry-leading medical professional liability insurer that helps protect healthcare providers from malpractice claims. ProAssurance Group is rated "A" (Excellent) by AM Best.

SOUTH CAROLINA AREA HEALTH EDUCATION CONSORTIUM (AHEC)

The South Carolina Area Health Education Consortium (AHEC) builds and supports the healthcare workforce South Carolina needs through a focus on recruiting, retaining, and educating healthcare professionals.

SOUTH CAROLINA MEDICAL ASSOCIATION ALLIANCE

The South Carolina Medical Association Alliance (SCMAA) is a registered 501(c)(3) nonprofit organization comprised of physician spouses who educate, advocate, and provide charitable support for the family of medicine.

SOUTH CAROLINA MEDICAL ASSOCIATION MEMBERS' INSURANCE TRUST

SCMA Members' Insurance Trust is a health and dental plan designed for SCMA members, their staff, and families. We provide numerous plan options that include unique benefits not commonly found on the open market.

SOUTH CAROLINA MEDICAL ASSOCIATION PRACTICE INNOVATIONS

PCMH provides free coaching and consulting services to primary care physician practices that wish to be recognized by NCQA as a Patient-Centered Medical Home.

SOUTH CAROLINA TOBACCO QUITLINE

The SC Tobacco Quitline provides free one-on-one counseling from certified Quit Coaches to help people ages 13 and up quit using tobacco. It doesn't matter if you vape, smoke, dip, or chew—the SC Tobacco Quitline can help you quit for keeps.

TAX CREDIT MARKETPLACE

Tax Credit Marketplace provides a comprehensive marketplace that connects accredited investors with opportunities to invest in tax credits within various sectors, including historic preservation, renewable energy, and economic development. We offer a streamlined process for investors to research, evaluate, and invest in tax credits that align with their investment goals and objectives. We serve a variety of investors from individuals to corporations and from insurance companies to banks. While only accredited investors are eligible to invest in tax credits, we aim to help these investors achieve their goals in tax savings.

VCOM – CAROLINAS

The Edward Via College of Osteopathic Medicine (VCOM) prepares globally minded, community-focused physicians to meet the needs of rural and medically underserved populations and promote research to improve human health. VCOM strives to recruit, retain, and graduate students who will address health care disparities including those related to rural locations, minority populations, poverty status, and primary care. We Are One College With Four Locations: Blacksburg, VA; Spartanburg, SC; Auburn, AL, and Monroe, LA. Established in 2011, VCOM-Carolinas has an enrollment of 628 student and 1,069 alumni.

WE ARE SHARING HOPE SC

We Are Sharing Hope SC (SHSC) is South Carolina's federally designated, nonprofit organ procurement organization (OPO) which facilitates the gift of organ and tissue donation across the state. Together we inspire our community, offer hope and change lives through the gift of organ, eye and tissue donation.

WESTFIELD

Founded in 1848, Westfield is a global leader in property and casualty insurance, delivering superior risk insights and innovative solutions to customers through a diverse portfolio of insurance products. Westfield underwrites commercial, personal, surety, and specialty lines of coverage through a network of leading independent agents and brokers in the United States and specialty products through Lloyd's of London Syndicate 1200. As a mutual insurance company with more than 3,000 employees, Westfield has revenues in excess of \$4 billion and more than \$10 billion in assets. Learn more at www.westfieldinsurance.com.

SOUTH CAROLINA MEDICAL ASSOCIATION

PAST PRESIDENTS

1848-52 James Moultrie, MD*
 1853-54 R. E. Wylie, MD*
 1855-56 E. Horlbeck, MD*
 1857-58 R. W. Gibbe, Sr., MD*
 1859-60 J. A. Mayes, MD*
 1869 A. N. Talley, MD*
 1870 T. T. Robertson, MD*
 1871 F. Peyre Porcher, MD*
 1872 John T. Darby, MD*
 1873 S. Baruch, MD*
 1874 James McIntosh, MD*
 1875 J. F. M. Geddings, MD*
 1876 James McIntosh, MD*
 1877 J. F. M. Geddings, MD*
 1878-79 S. S. Marshall, MD*
 1880 F. M. Robertson, MD*
 1881 B. W. Taylor, MD*
 1882 F. L. Parker, MD*
 1883 F. F. Gary, MD*
 1884 R. A. Kinloch, MD*
 1885 A. A. Moore, MD*
 1886 O. B. Mayer Jr., MD*
 1887 Cornelius Kollock, MD*
 1888 T. Grange Simons, MD*
 1889 C. R. Taber, MD*
 1890 James Evans, MD*
 1891 Thomas P. Bailey, MD*
 1892 J. R. Bratton, MD*
 1893 W. H. Nardin, MD*
 1894 J. L. Ancrum, MD*
 1895 T. J. McKie, MD*
 1896 J. L. Napier, MD*
 1897 L. C. Stephens, MD*
 1898 C. W. Kollock, MD*
 1899 T. T. Earle, MD*
 1900 W. P. Porcher, MD*
 1901 G. R. Dean, MD*
 1902 T. G. Croft, MD*
 1903 Manning Simons, MD*
 1904 E. F. Darby, MD*
 1905 Robert Wilson, MD*
 1906 David Furman, MD*
 1907 T. P. Whaley, MD*
 1908 LeGrand Guerry, MD*
 1909 S. C. Baker, MD*
 1910 J. L. Dawson, MD*
 1911 J. H. McIntosh, MD*
 1912 J. W. Jervey, MD*
 1913 C. M. Rees, MD*
 1914 William Weston, MD*
 1915 E. F. Parker, MD*
 1916 G. A. Neuffer, MD*
 1917 C. B. Earl, MD*
 1918 F. H. McLeod, MD*

1919 J. A. Hayne, MD*
 1920 E. W. Pressly, MD*
 1921 W. P. Timmerman, MD*
 1922 H. L. Shaw, MD*
 1923 C. F. Williams, MD*
 1924 L. O. Mauldin, MD*
 1925 D. M. Crossom, MD*
 1926 R. S. Cathcart, MD*
 1927 G. H. Bunch, MD*
 1928 D. L. Smith, MD*
 1929 R. E. Hughes, MD*
 1930 C. R. May, MD*
 1931 K. M. Lynch, MD*
 1932 C. A. Mobley, MD*
 1933 J. R. Young, MD*
 1934 R. E. Abell, MD*
 1935 William Egleston, MD*
 1936 S. E. Harmon, MD*
 1937 R. C. Bruce, MD*
 1938 J. H. Taylor, MD*
 L. M. Stokes, MD*
 1939 J. H. DesPortes, MD*
 1940 Douglas Jennings, MD*
 1941 W. L. Pressly, MD*
 1942 J. M. Truluck, MD*
 1943 Thomas A. Pitts, MD*
 1944 W. A. Smith, MD*
 1945 W. R. Wallace, MD*
 1946 W. T. Brockman, MD*
 1947 J. C. McLeod, MD*
 1948 O. B. Chamberlain, MD*
 1949 R. B. Durham, MD*
 1950 R. Macdonald Sr., MD*
 1951 W. R. Tuten, MD*
 1952 J. Dechard Guess, MD*
 1953 L. P. Thackston, MD*
 1954 C. R. F. Baker, MD*
 1955 Thomas R. Gaines, MD*
 1956 O. B. Mayer, MD*
 1957 W. H. Prioleau, MD*
 1958 D. Lesesne Smith, MD*
 1959 Robert L. Crawford, MD*
 1960 W. Weston Jr., MD*
 1961 J. P. Cain Jr., MD*
 1962 Charles N. Wyatt, MD*
 1963 J. H. Gressette, MD*
 1964 Robert Wilson, MD*
 1965 Frank C. Owens, MD*
 1966 Julian P. Price, MD*
 1967 G. D. Johnson, MD*
 1968 Norman O. Eaddy, MD*
 1969 Joel W. Wyman, MD*
 1970 William L. Perry, MD*
 1971 Ben N. Miller, MD*

1972 John P. Booker, MD*
 1973 Edward F. Parker, MD*
 1974 Harold P. Hope, MD*
 1975 D. G. Kilgore Jr., MD*
 1976 C. Tucker Weston, MD*
 1977 J. D. Gilland, MD*
 1978 Waito O. Tanner, MD*
 1979 John C. Hawk Jr., MD*
 1980 H. L. Peebles, MD*
 1981 Halsted M. Stone, MD*
 1982 William H. Hunter, MD*
 1983 Euta M. Colvin, MD*
 1984 Randolph D. Smoak Jr., MD*
 1985 Kenneth N. Owens, MD*
 1986 Leonard W. Douglas, MD*
 J. Gavin Appleby, MD*
 1987 Walter J. Roberts Jr., MD*
 1988 C. R. Duncan Jr., MD*
 1989 T.C. Rowland Jr., MD*
 1990 Daniel W. Brake, MD*
 1991 John W. Simmons, MD*
 1992 J. Chris Hawk III, MD*
 1993 Bartolo M. Barone, MD*
 1994 Edward Catalano, MD*
 1995 O. Marion Burton, MD*
 1996 Benjamin E. Nicholson, MD*
 1997 Carol S. Nichols, MD*
 1998 S. Nelson Weston, MD*
 1999 Stephen A. Imbeau, MD*
 2000 William H. Hester, MD*
 2001 Roger A. Gaddy, MD*
 2002 J. Capers Hiott, MD*
 2003 R. Duren Johnson Jr., MD*
 2004 Boyce G. Tollison, MD*
 2005 John P. Evans, MD*
 2006 Gerald A. Wilson, MD*
 2007 Jerry R. Powell, MD*
 2008 Gerald E. Harmon, MD*
 2009 Richard A. Schmitt, MD*
 2010 John G. Black, MD*
 2011 Gregory Tarasidis, MD*
 2012 Gary A. Delaney, MD*
 2013 Andrew J. Pate, MD*
 2014 Bruce A. Snyder, MD*
 2015 H. Timberlake Pearce, MD*
 2016 Marshall L. Meadors III, MD*
 2017 Alexander W. Ramsay, MD*
 2018 Richard C. Osman, MD*
 2019 March E. Seabrook, MD*
 2020 Todd E. Schlesinger, MD*
 2021 Michael T. Finch Jr., MD*
 2022 John C. Ropp III, MD*
 2023 Christopher A. Yeakel, MD*
 2024 Helen M. Stockinger, MD*

* Deceased

NOW IS THE TIME FOR PHYSICIAN VOICES TO BE HEARD.

Physicians are trained to lead. Protect your patients against higher costs and lower quality care by joining the fight to protect Physician-led healthcare.



Your donation to SCMedPAC — the largest bipartisan political voice representing SC physicians — is one of the most powerful ways to support physician-friendly legislators.



DONATE TODAY!



NOTES

NOTES

[illegible]

SPECIAL THANKS TO OUR MEETING SUPPORTERS

PLATINUM SPONSOR



GOLD SPONSORS



BRONZE SPONSORS



ICE CREAM BREAK SPONSOR

REFRESHMENT SPONSOR

WIFI SPONSOR

LANYARD SPONSOR



SCMA AND SCGA EXHIBITORS

890 Capital
AbbVie
Absolute Total Care
Alliance for a Healthier
South Carolina
American Health Imaging
Biocon
BlueCross BlueShield of
South Carolina
Boston Scientific
Cantey Technology
Consultants
Carolinas Medical Group
Management Association
Castle Biosciences
Celltrion

Chubb Insurance
Constellation Quality Health
CRH Anesthesia & CRH
O'Regan System
Curi
Dexcom
Doctors Care, P.A.
Express Scripts
First Choice by Select Health
of South Carolina
Fuji
Fulcrum Risk Solutions
Gilead Sciences
HealthLinks Marketing
Integral Leaders in Health
Intercept

Johnson & Johnson
Madrigal
MagMutual
Mallinckrodt
Medtronic
Molina Healthcare
MUSC College of Medicine
Nestle
Olympus
Orphalan
PAI
Pfizer
Pfizer Vaccines
Phathom Pharmaceuticals
Premier Health
Prisma Health

ProAssurance
QOL Medical
Regeneron
SC Tobacco Quitline
SCMA Members'
Insurance Trust
SCMA Practice Innovations
Sebela
South Carolina AHEC
South Carolina Medical
Association Alliance
Takeda
Tax Credit Marketplace, LLC
VCOM - Carolinas
We Are Sharing Hope SC
Westfield



Protecting what matters most.



FULCRUM
RISK SOLUTIONS

An SCMA Company

-  **Your People** *Health Insurance*
-  **Your Practice** *Business Insurance*
-  **Your Way of Life** *Malpractice, Disability,
Life Insurance*

Insurance Protection for Medical Providers



FULCRUMRISKSOLUTIONS.COM

*Contact us for all of your
insurance needs: 803.798.3584*

